

033350

RECEIVED
LARAMIE
CLERK

CERTIFIED LAND CORNER RECORDATION

'87 AUG 28 AM 9 08

DESCRIPTION OF CORNER EVIDENCE FOUND, AND ORIGINAL RECORD (If known)

T. 16N
36 | 31
1 | 6

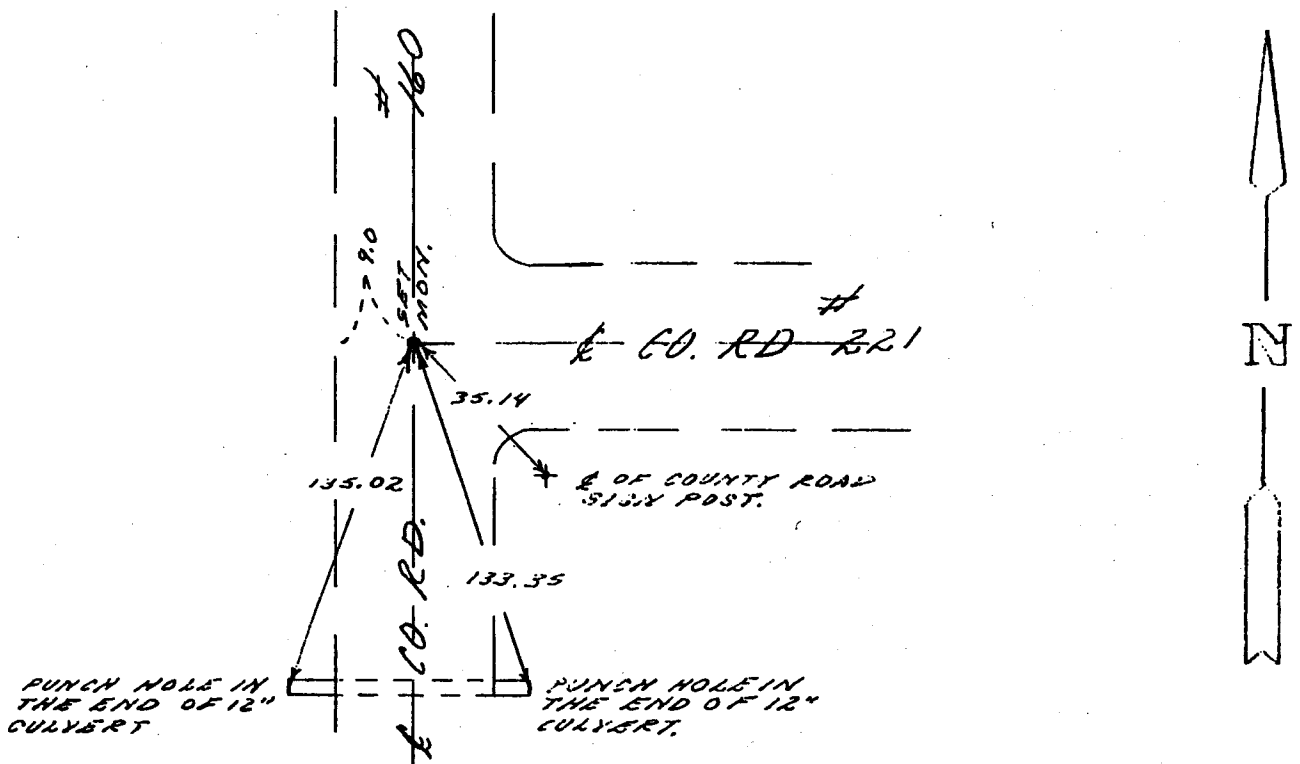
FOUND: NO EVIDENCE OF PREVIOUS MONUMENTATION.
SET: 1 1/2" X 18" ENDG REBAR WITH ALUMINUM CAP STAMPED "SSS L.S. 2500"
PROTECTING 0.3 FEET BELOW ROAD SURFACE SET AT PROPORTIONATE
DISTANCE AND FROM ADJACENT LAND OWNERS TESTIMONY.

R. 61W, R. 60W.
T. 15N

DESCRIPTION OF MONUMENT AND ACCESSORIES ESTABLISHED TO PERPETUATE THE ORIGINAL LOCATION OF THIS CORNER:

SEE TIES BELOW

SKETCH, WITH COURSE AND DISTANCE TO ADJACENT CORNER IF DETERMINED IN THIS SURVEY. (May Sketch or Paste Reproduction on Reverse Side.)



I, JOHN A. STEIL certify that I have carefully performed or reviewed the work done on the diagrammed corner as reported on this recordation form and approve the same.

John A. Steil U.S. 2500
Signature of Surveyor Registration No.

STATE OF WYOMING,
Office of Clerk and Recorder,
County of Laramie

This "corner record" was filed for record on the 28 day of August, 1987, was noted on the cross-index plat and is assigned page No. _____, in book No. _____

Jack C. Whitaker
County Official
Cross Index No. A-25 T. 15N R. 61W Mer. _____
A-1 T. 15N R. 60W Mer. _____
E-25 T. 16N R. 61W Mer. _____
Z-1 T. 16N R. 60W Mer. _____
_____ T. _____ R. _____ Mer. _____
_____ T. _____ R. _____ Mer. _____
_____ T. _____ R. _____ Mer. _____